

NICHT-INVASIVE

ANGIO OCT

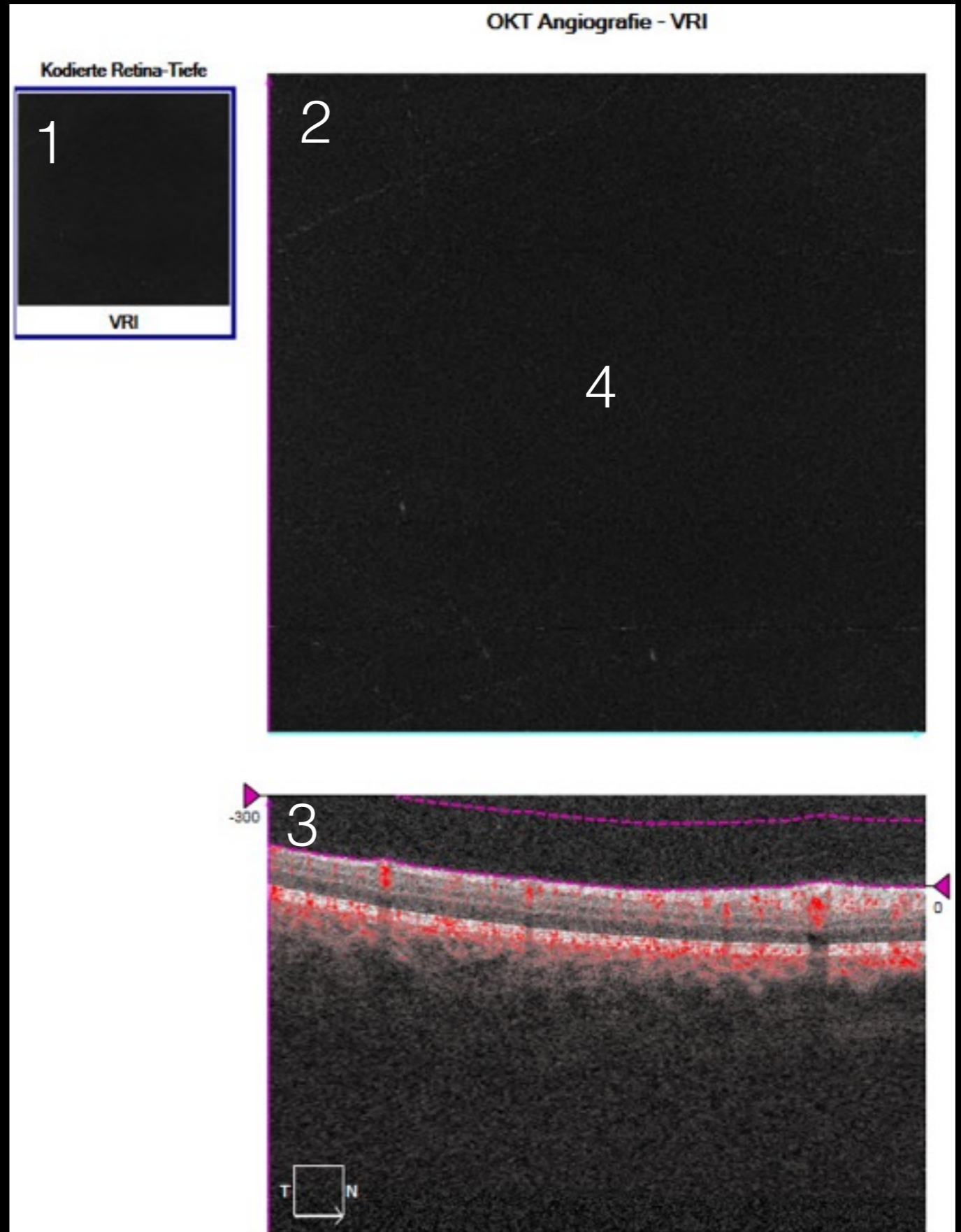


Normales AngioOCT Synopsis

1. Alle Anaylsemöglichkeiten
2. Gewählte Zone Übersicht
3. Gewählte Zone Detail
4. Gewählte Zone im Querschnittsbild

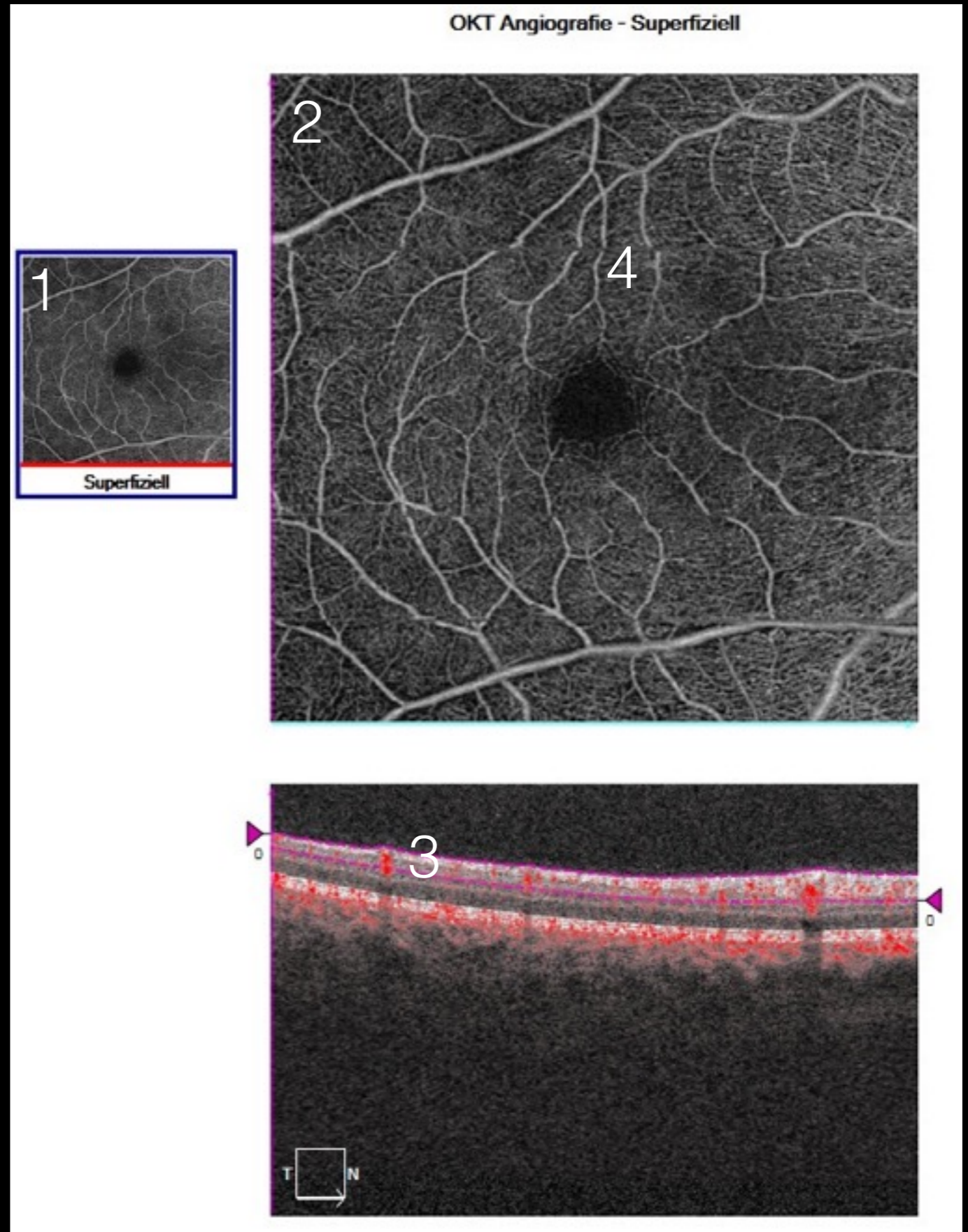
1. Übersicht
2. Vergrößerung
3. Entsprechende Selektion der Zone im Querschnittsbild
4. praktisch kein Signal vorhanden, da keine Gefäße oberhalb der internal limiting membrane (ILM)

Normales AngioOCT Vitreous-Retina Interface



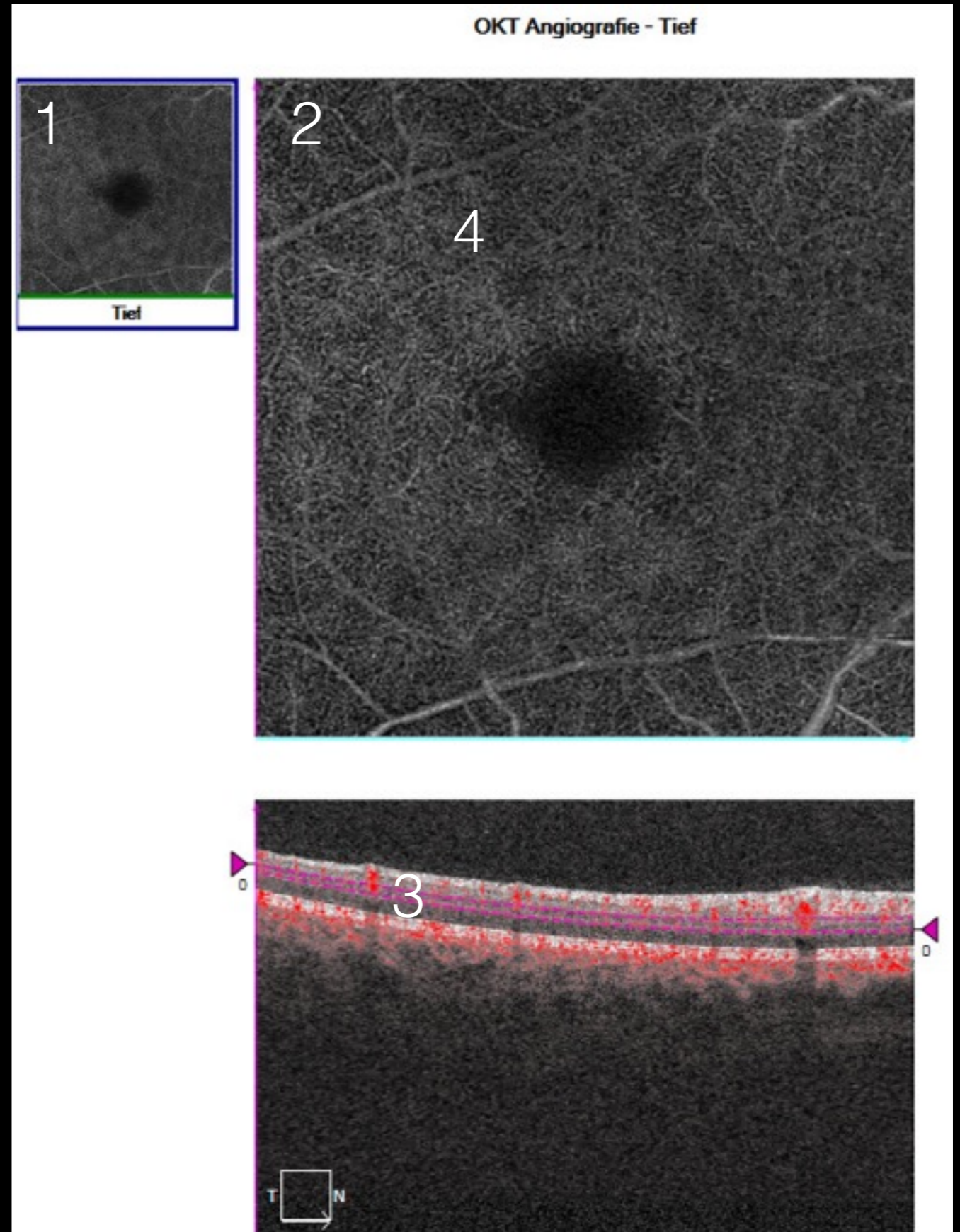
1. Übersicht
2. Vergrößerung
3. Entsprechende Selektion der Zone im Querschnittsbild
4. Superficial vascular complex (lines - weblike: linienartig, netzartig“)

Normales
AngioOCT
superficial



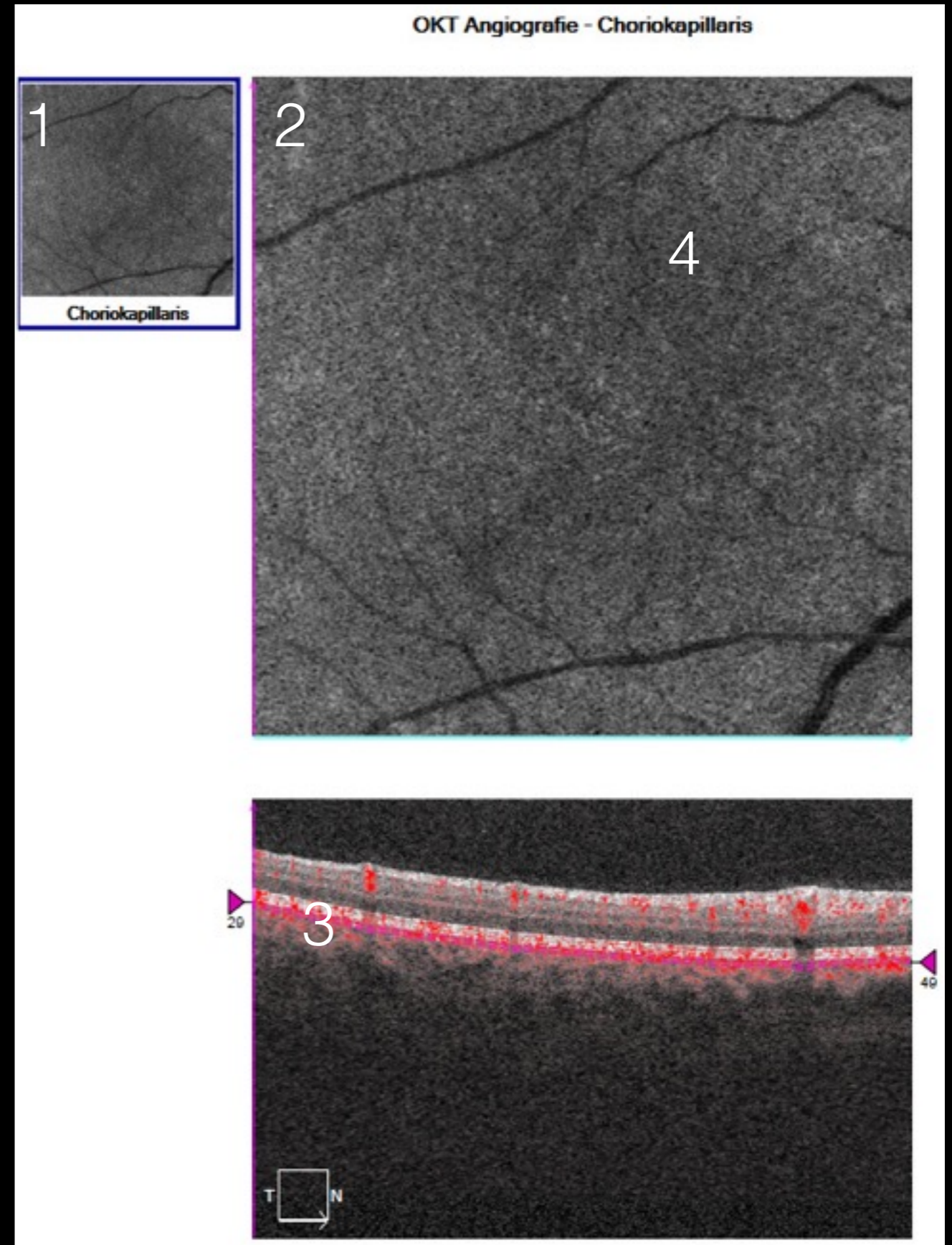
1. Übersicht
2. Vergrößerung
3. Entsprechende Selektion der Zone im Querschnittsbild
4. Deep vascular complex (close loops: enge Schleifen)

Normales
AngioOCT
deep = tief



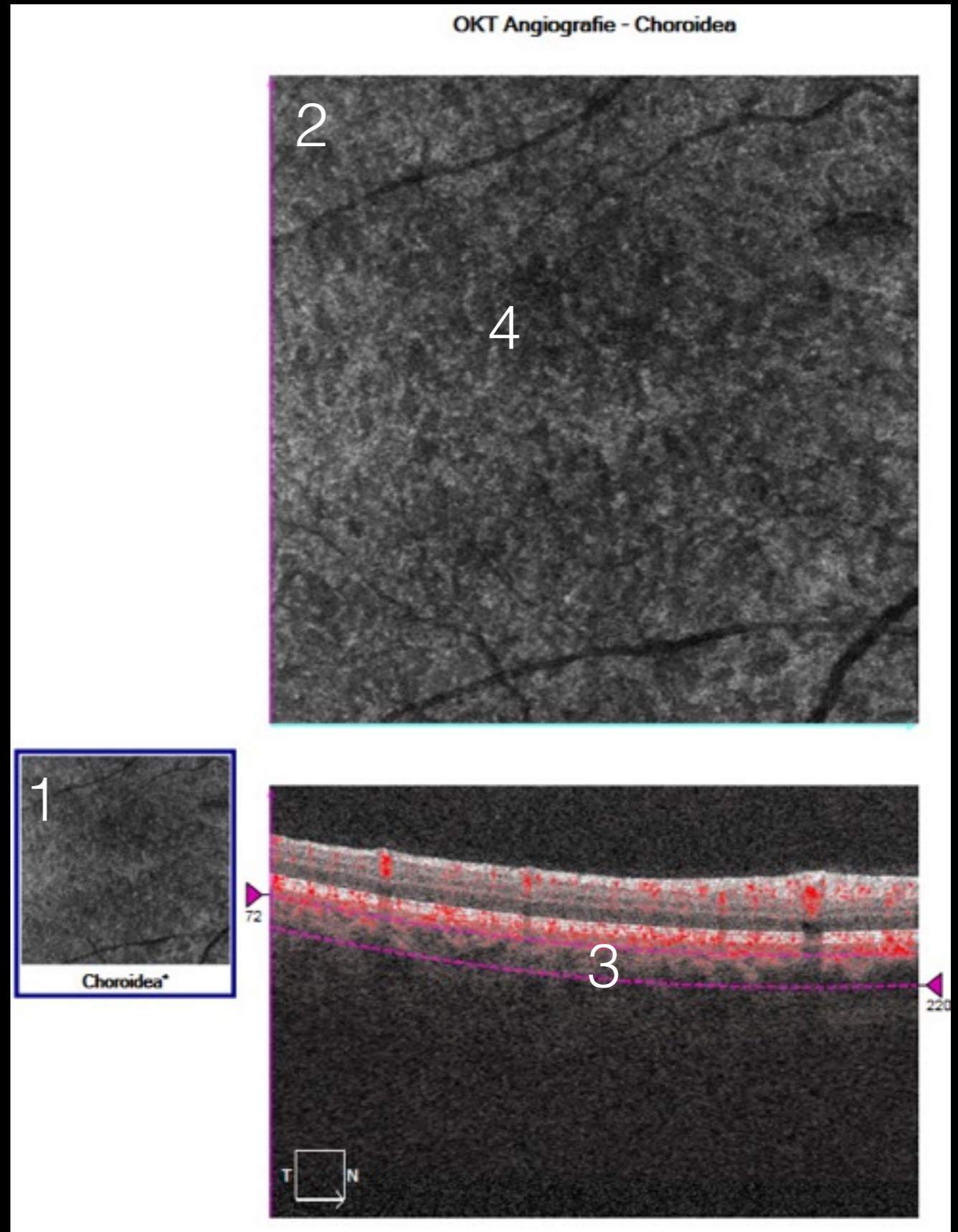
1. Übersicht
2. Vergrößerung
3. Entsprechende Selektion der Zone im Querschnittsbild
4. Choriocapillaris (mesh: Gitter)

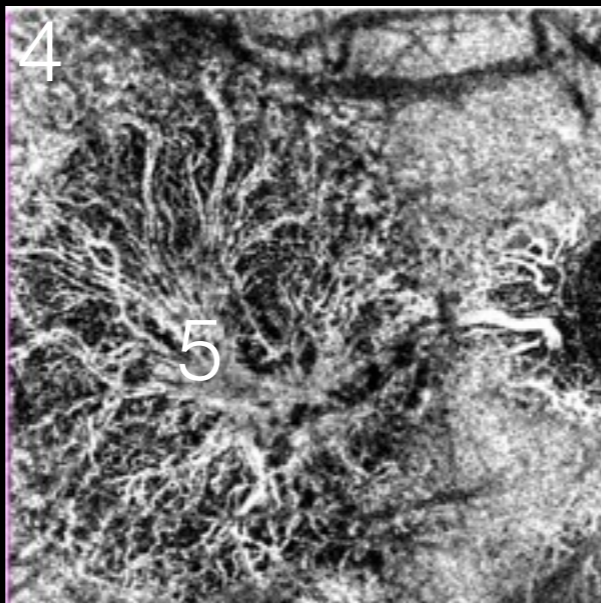
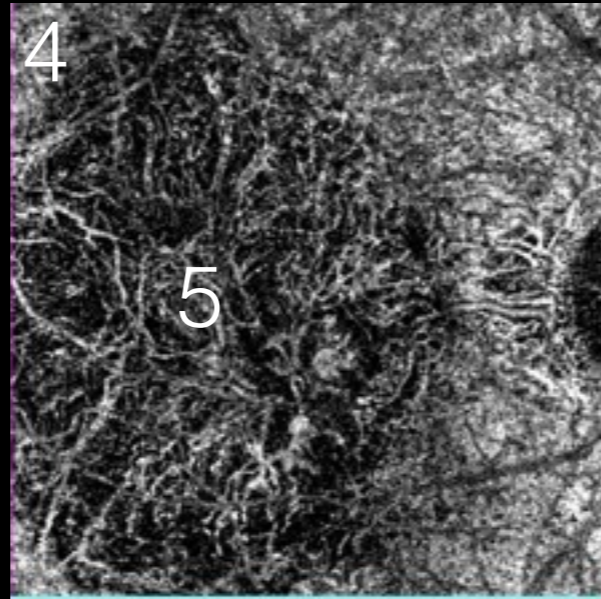
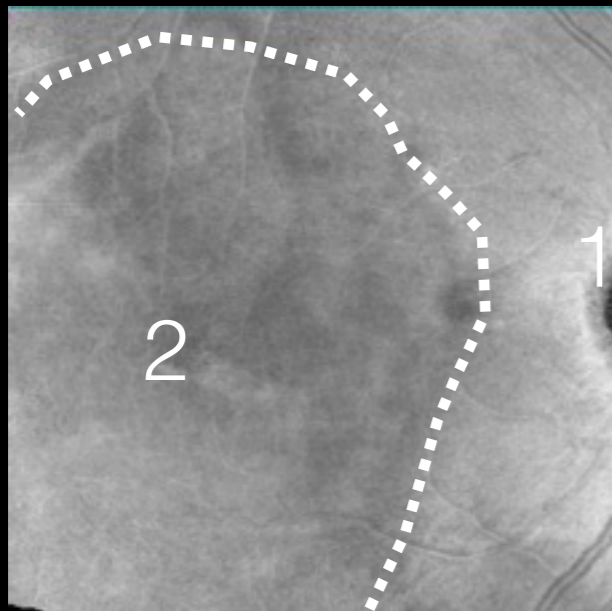
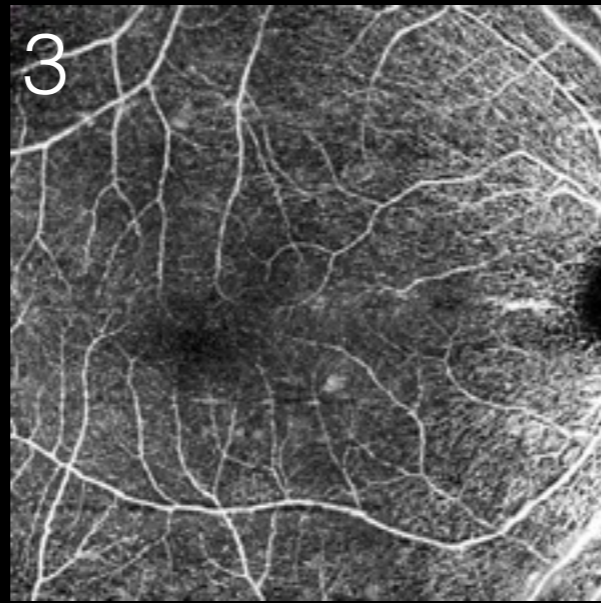
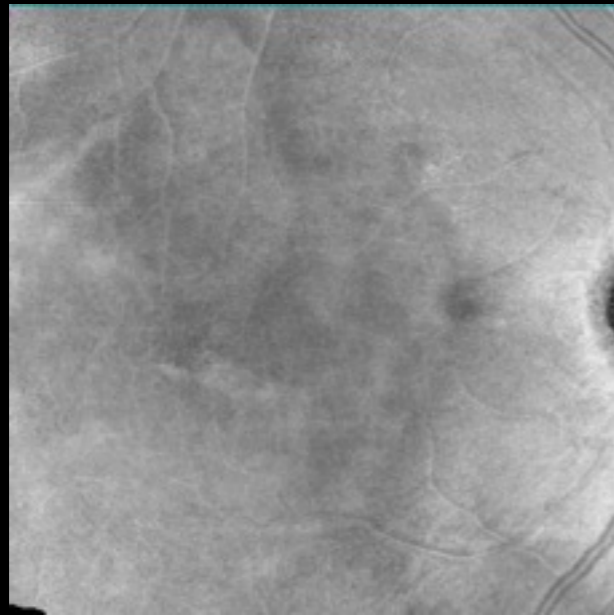
Normales
AngioOCT
Choriocapillaris



1. Übersicht
2. Vergrößerung
3. Entsprechende Selektion der Zone im Querschnittsbild
4. Choroidea (dunkle Gänge)

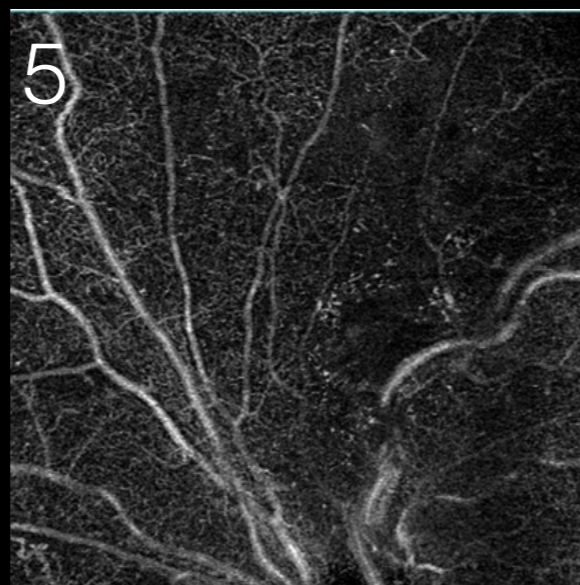
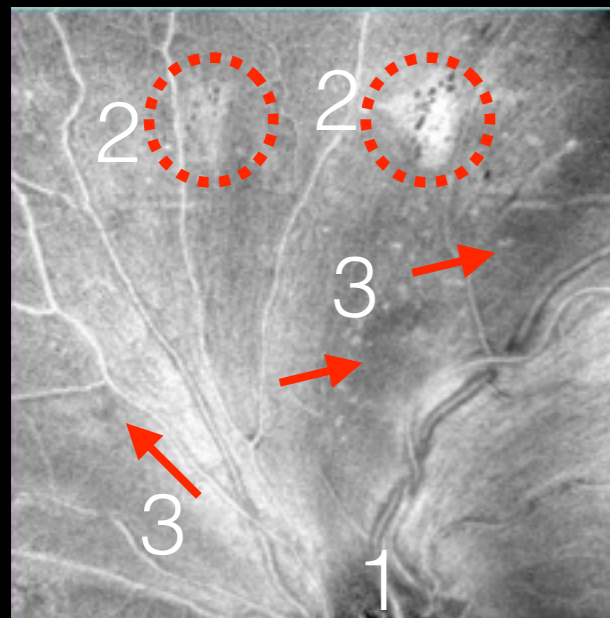
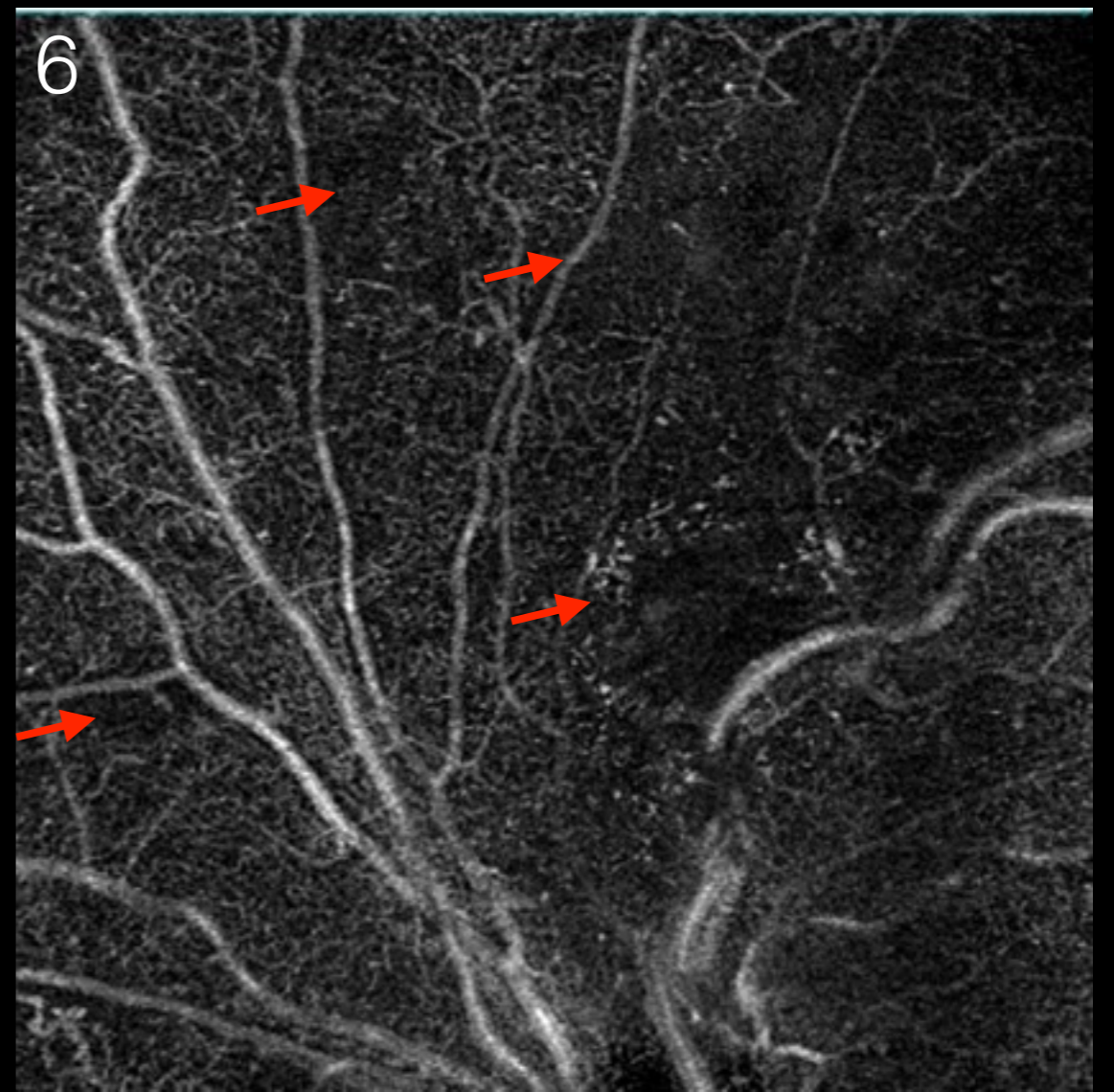
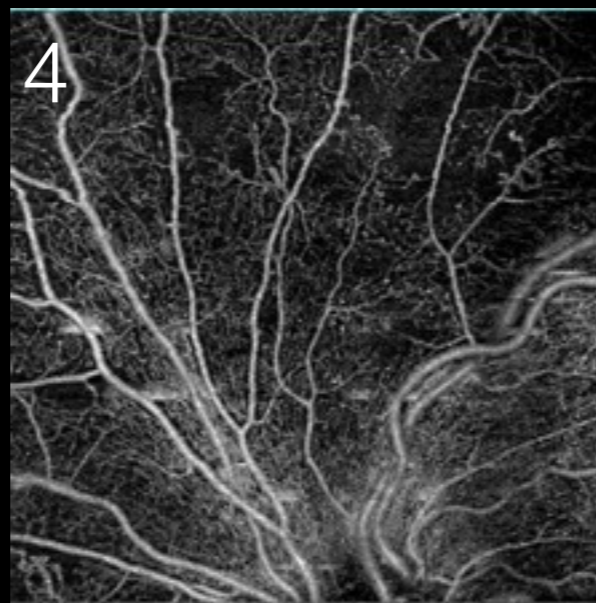
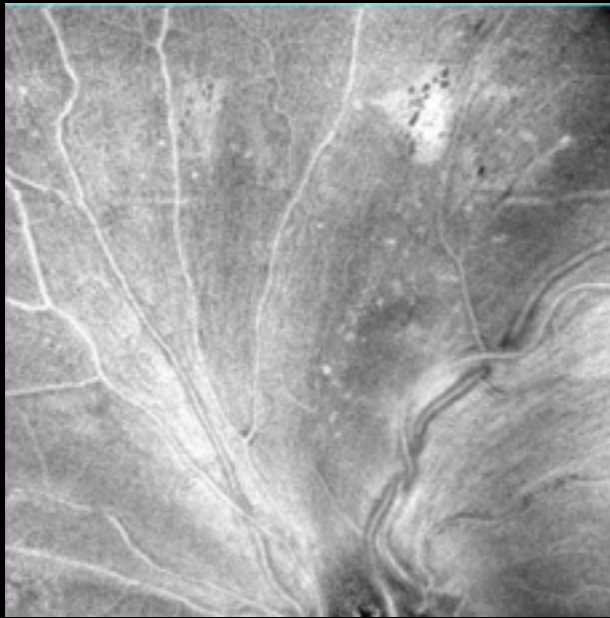
Normales AngioOCT Choroidea





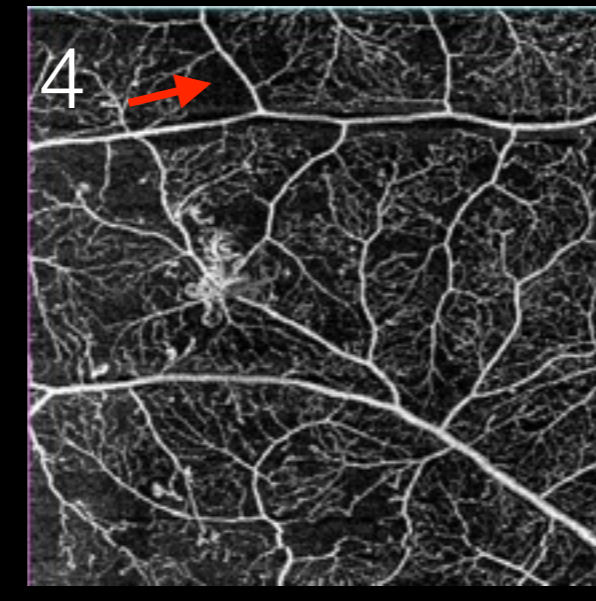
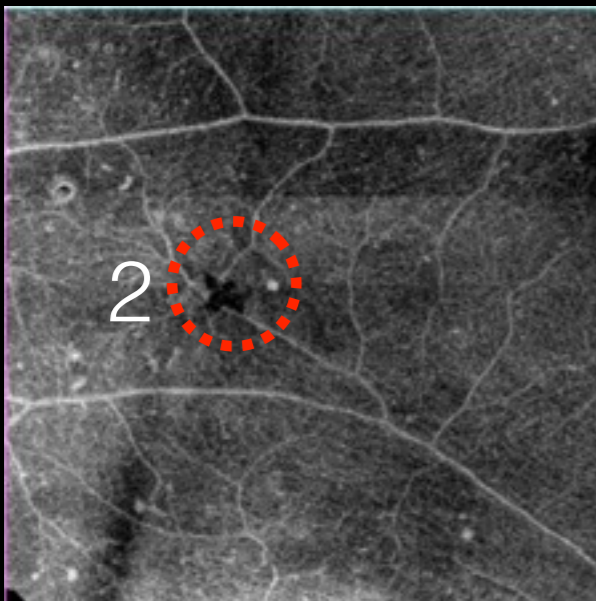
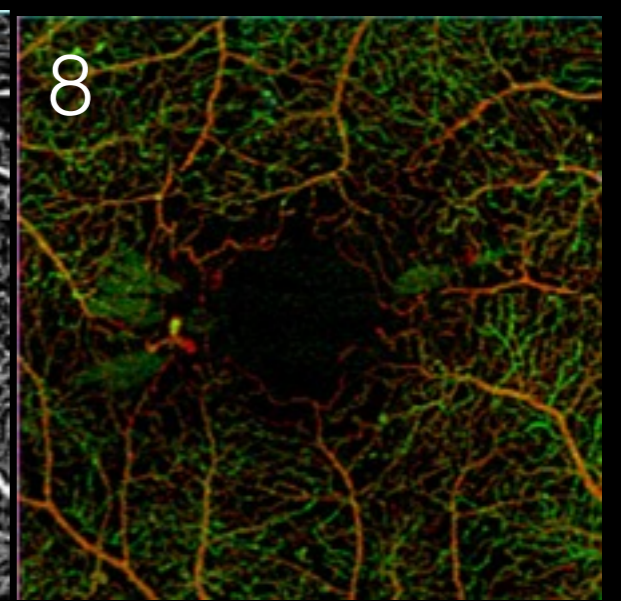
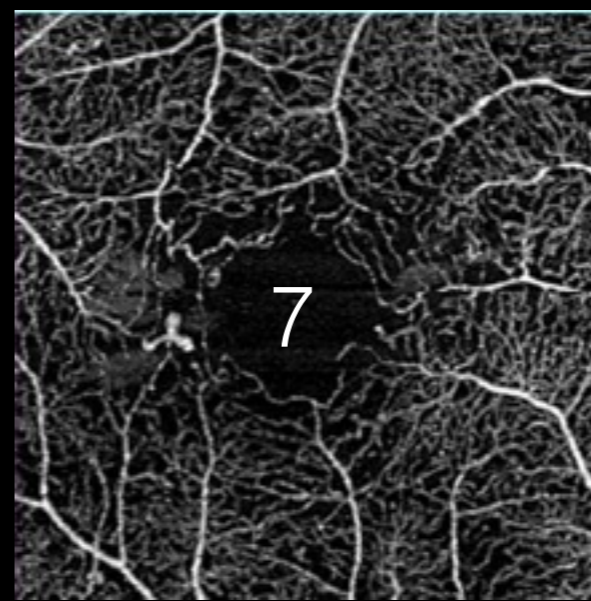
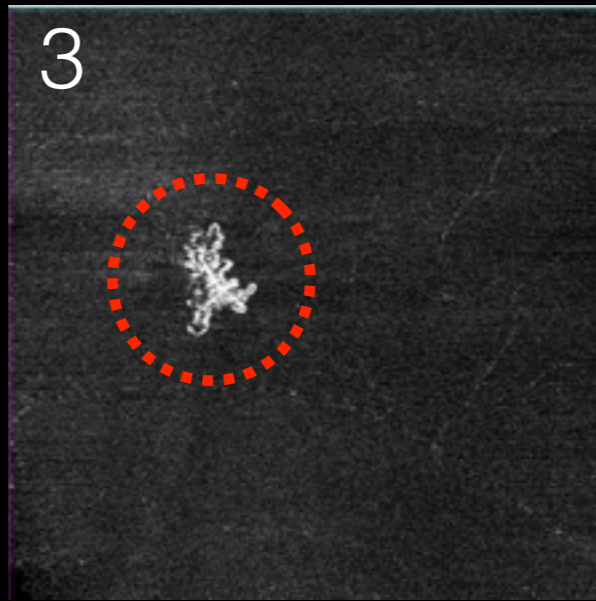
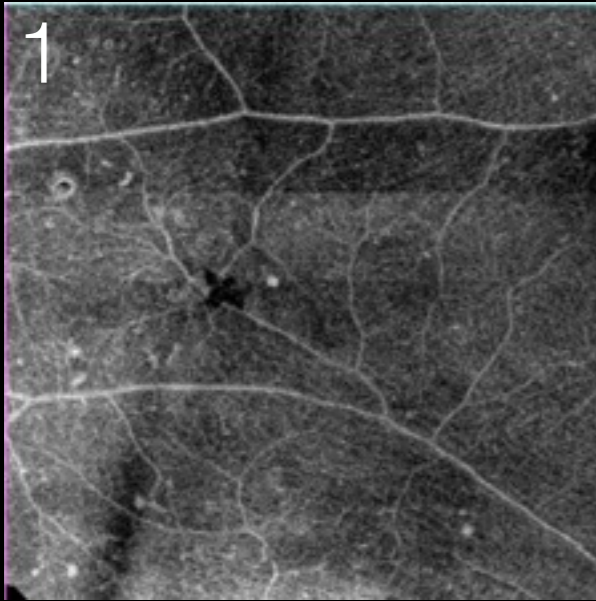
Exudative
AMD

1. Sehnerv/optic disc
2. AMD
3. superficial plexus
4. deep plexus
5. CNV
6. Kombinierte Ansicht



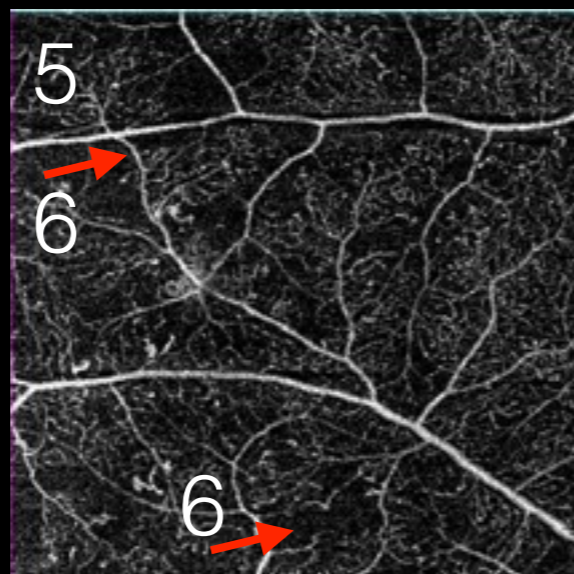
- 1. optic disc
- 2. Sichtbare Ischämie
- 3. Verdacht auf Ischämie
- 4. superficial vascular complex
- 5. deep vascular complex
- 6. Kapillarverlust /vessel drop out →

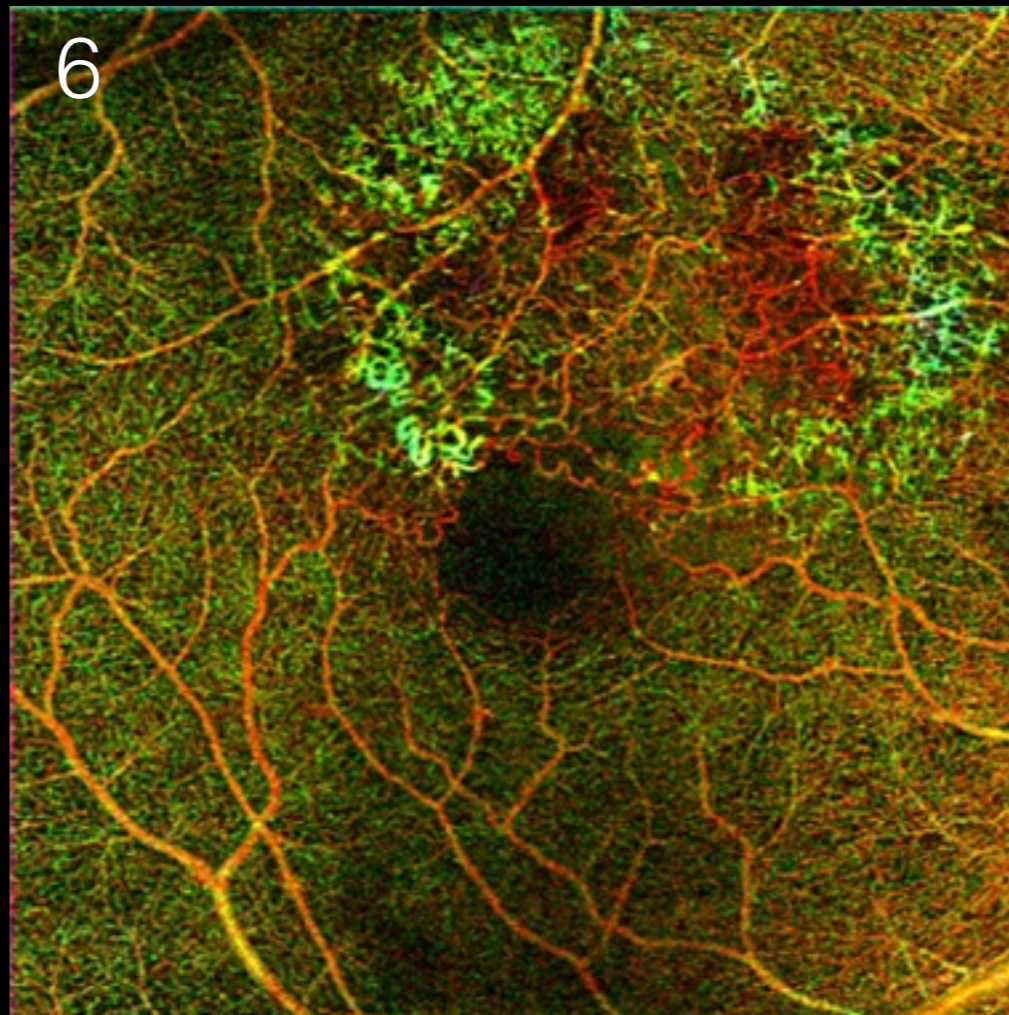
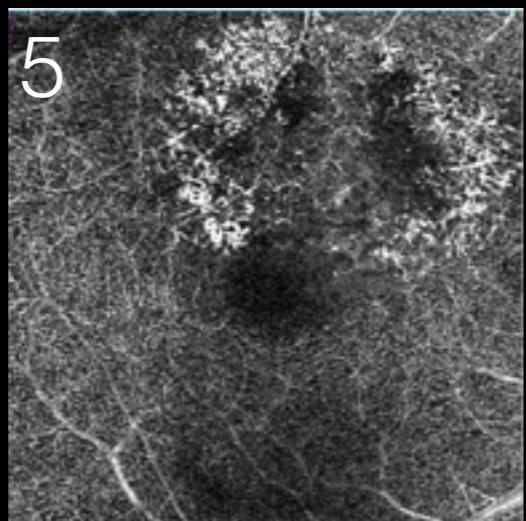
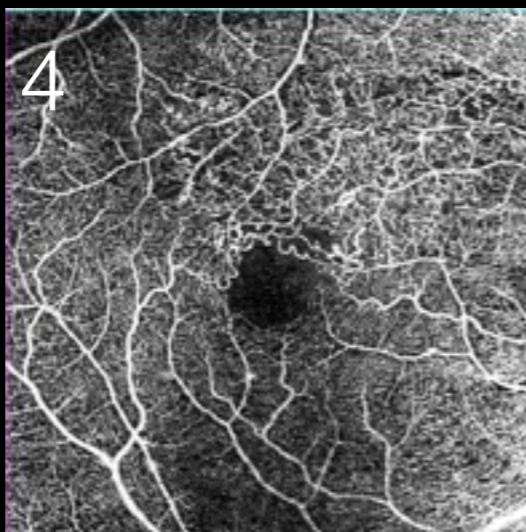
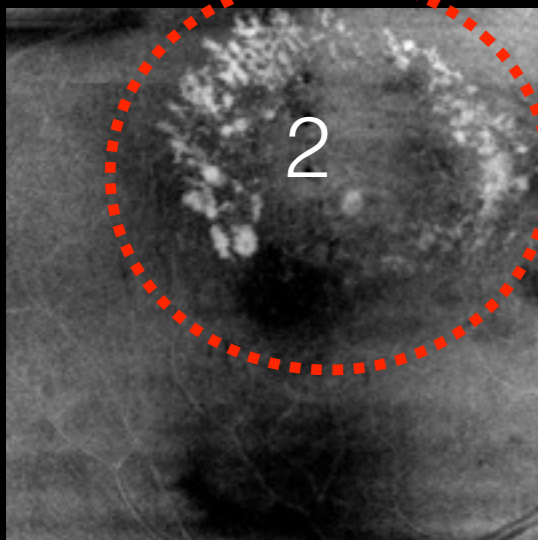
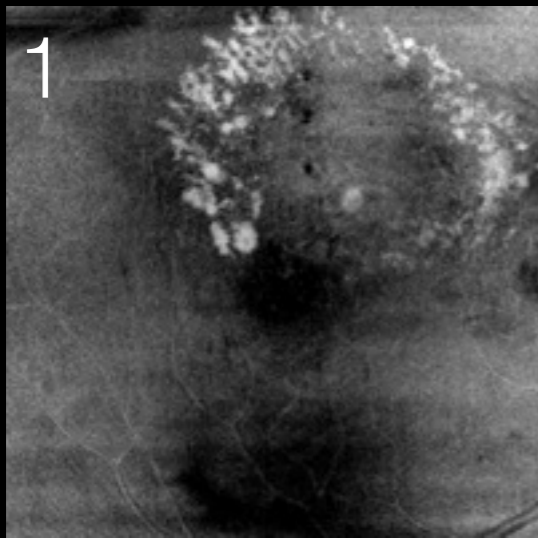
Nicht proliferative Diabetische Retinopathie



1. „normale“ Retina?
2. Neovaskularisation (Neo)
3. Selektive Darstellung Neo
4. superficial vasc. complex
5. deep vascular complex
6. massiver Kapillarverlust
7. Verbreiterte FAZ
8. Kombinierte Gefäss-Zonen

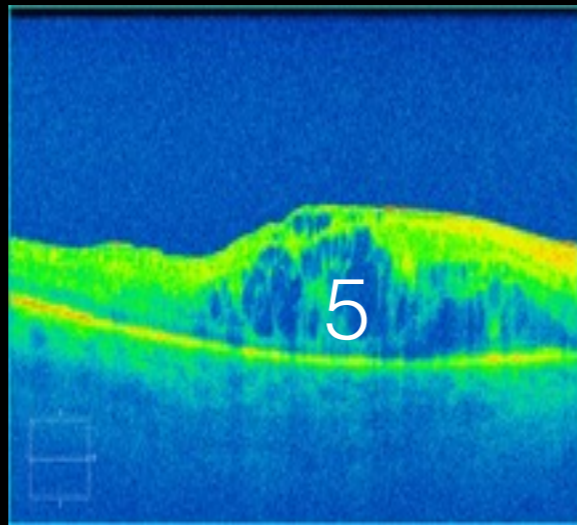
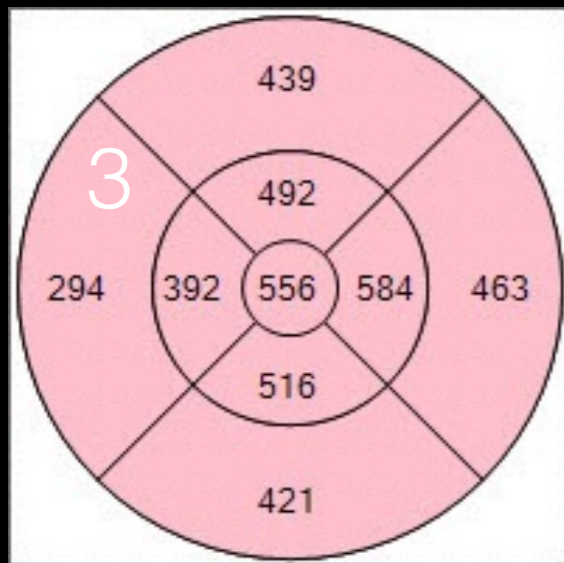
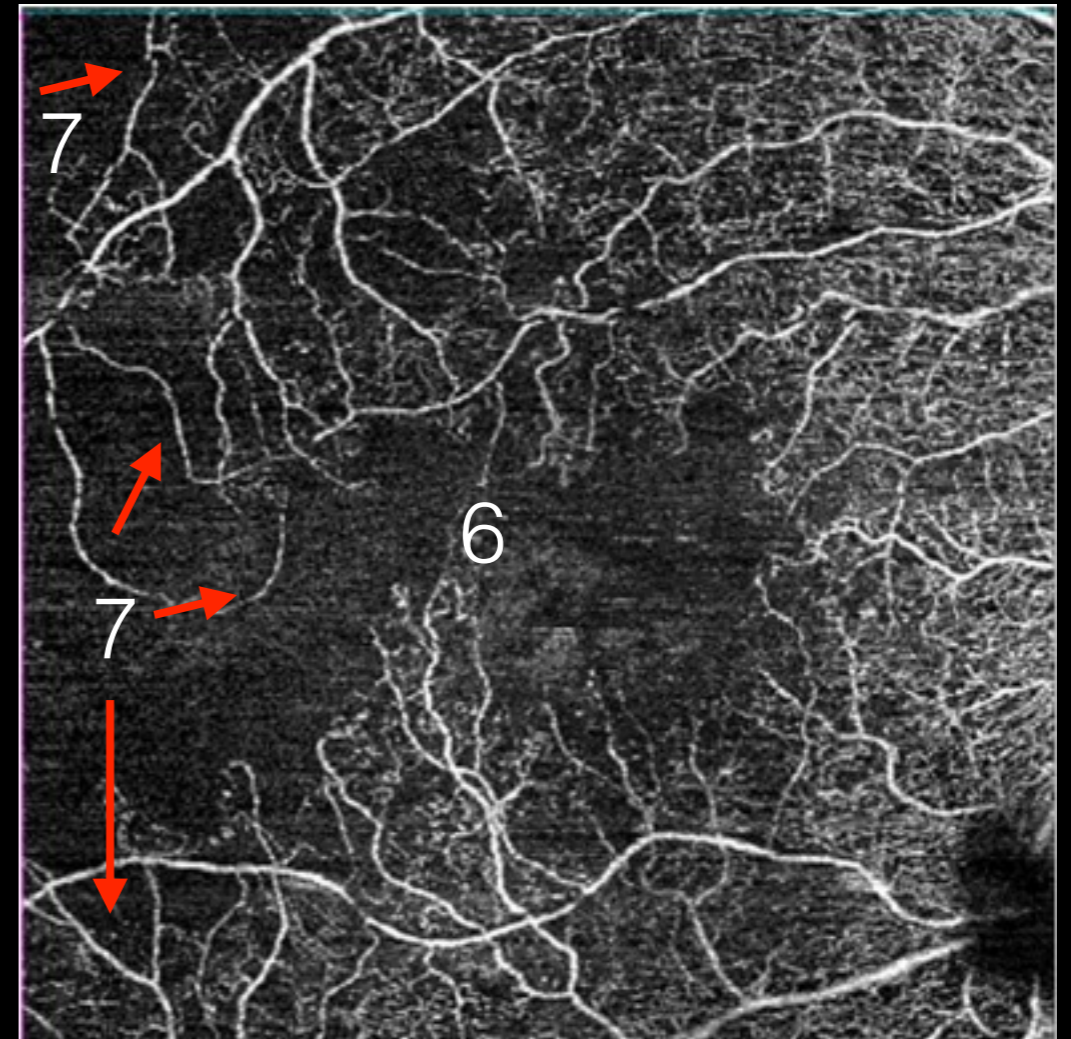
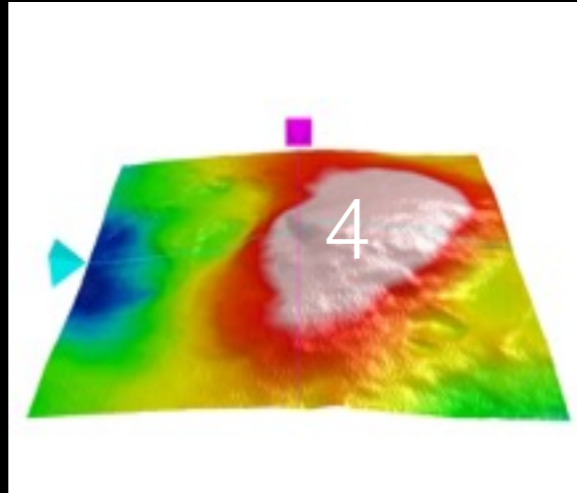
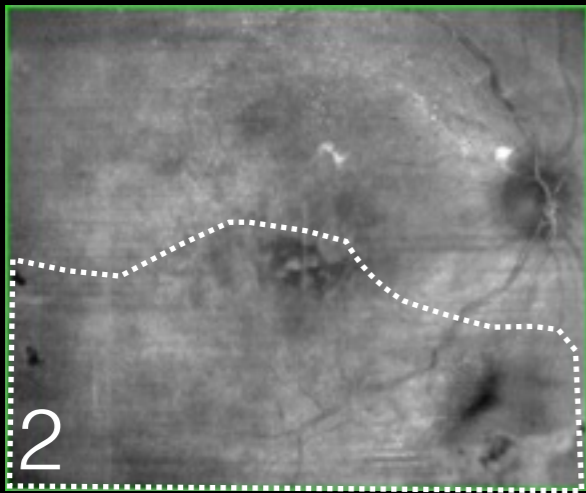
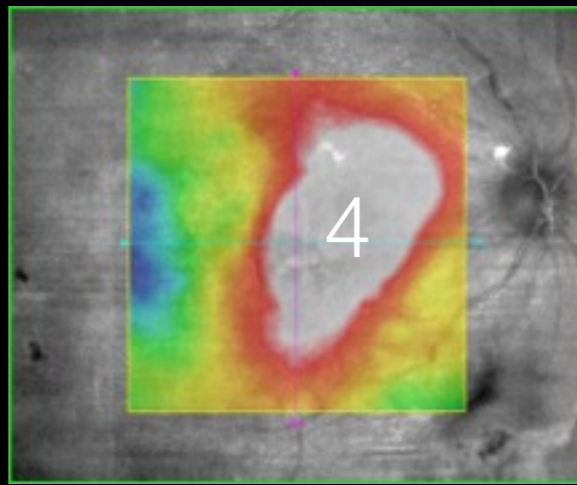
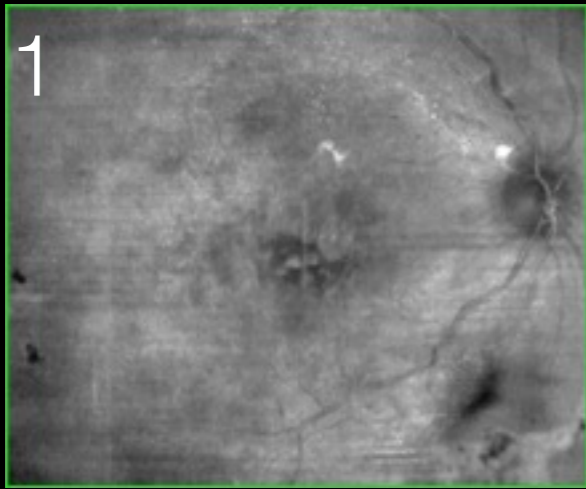
Proliferative Diabetische Retinopathie





1. Fundusbild mit Exudaten
2. Exudation
3. superfic. capillary drop out
4. middle capillary drop out
5. deep capillary drop out
6. Kombinierte Zonen

Venenast-
verschluss



1. Fundusbild
2. Vermuteter Verschluss
3. Makulaödem
4. Makulaödem 3D
5. Zystoides Makulaödem
6. Grosse FAZ
7. Massiver Kapillarverlust

Zentralvenenverschluss

Bilder offeriert von



www.zeiss.de

Unterstützt durch



Dr. med. Peter Maloca
Dr. med. Pascal Hasler
www.octlab.ch